

2-DAY ESTATE AUCTION

LOCATION
15586 EVANS ROAD
BASEHOR, KS

SAT, MAY 18TH at 10:00 a.m
SUN, MAY 19TH at Noon

DAY 1

ANTIQUES

New York newspaper prints – 1864/1863
Motorola TV, Victory trumpet
Pedal car, Singer pedal sewing machine



Koken barber chair



Press, Settee
National cash register
Large safe
Traffic light
Fly Tyer

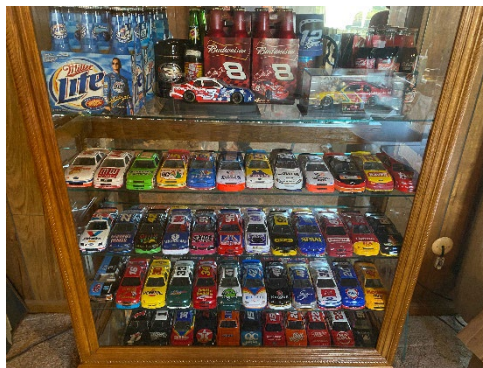
COLLECTABLES

Numerous pieces racing memorabilia
1958 Gypsy tour group photo
Billiards history display
Beer signs & advertising



Sports memorabilia
(2) Gator heads
Robert E. Lee statues
Great Dane statues
Beer steins
Indian décor
Falstaff beer clock
Racing banners

Hot rod magazines
Neon Signs
Chevrolet flange sign
Numerous 1/24 scale diecast cars



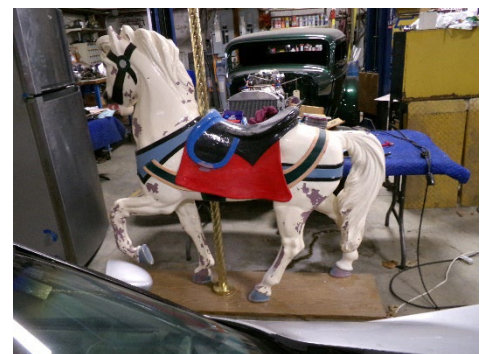
TOOLS

Snap-on collector's wrench set
Snap-on Puller set
Snap-on Steering wheel puller
Snap-on memorabilia
Snap-on MT25 scanner
Mac tools racing series knives
Welding screen
Dual pump telescoping transmission jack
– model 72550
Numerous oils, lubricants, paints, & primer
Work benches, Ratchet straps
Pittsburg 2-ton engine hoist
Baldor buffer stand, ladders
16 spd drill press, 16" scroll saw
Bolt bin, Gas caddy
Brut sheet metal brake
4x36 belt and disc sander
20 ton hydraulic press
200 amp battery charger
Schaefer 36" shop fan



Jack stands, Ridgid shop vac
Mover dollies, Pallet jack
Parts washer, Torch set w/cart
Speed Aire 80 gal air compressor
Dewart 12" compound miter saw
Campbell Hausfeld 60 gal 5hp air comp.
OTC control arm bushing kit
Matco harmonic balancer installer
American pipe tap & die
Gear wrench pulley puller set

Matco Hole saw kit
Titan 5 ton hyd. Cable crimper
Porter Cable brad nailer
Matco 8 pc snap ring plier set
J&W rethreading set
Henson tap & die set
Astro EZ out set, Reamer
Rotabroach sheet metal cutters
AMP pro metal saw
Numerous sockets & wrenches
Eastwood stitch welder
OTC slider hammer
DeWalt Sawzall, Rockwell Sawzall
Mity vac vacuum pump set
Dremel tool, Tubing bender
Camshaft degree wheel kit
Drill doctor bit sharpener
Ryobi jigsaw, Pop rivet set
Milwaukee 1/2" angle drill
Greenfield tap & die set



MISCELLANEOUS

Floor gun safe, (2) display cases, Evinrude
Fisherman boat motor, Hobart meat slicer,
10x10 canopy, (2) refrigerators, Vulcan gas
grill, popcorn machine, coin operated
dart board, Samsung 52" TV, World's
American Finest shuffleboard table, Cedar
chests, welding screen, label
Miscellaneous items too numerous to mention

CAR PARTS

Numerous tires, wheels, valve covers, intake
manifold, carburetors, oil pans, A-Arms,
suspension parts, mufflers, old trim mouldings,
headers, exhaust, hoods, grills, bucket
headlights, hotrod magazines, transmission
cover, bumpers, old
Radios, Baby Moon hubcaps, gauges, console,
GM 4 spd. Transmission, starters, alternators,
distributors, big black heads, (5) automatic
transmissions, Cadillac Northstar 32 valve V-8
motor, brake boosters, misc. motors on stands,
Posi track 12 bolt Chevy rearend
55-64 Chevy rearend

Owner: Estate of Ron Williams, founder of Wyandot B-B-Q, Kansas City, KS
Tracy Ogle, Executor

DAY 1 AUCTIONEER'S NOTE: We will sell the listed items to the highest bidder. View our website or Facebook for pictures. Early preview and registration – Friday, May 17th 9:00 a.m – 6:00 p.m. Parking will be limited the day of the sale, please arrive early.

MOORE AUCTION SERVICE, INC. Jamie Moore, Auctioneer – (913) 927-4708 www.kansasauctions.net/moore

TERMS & CONDITIONS: Cash, Credit Cards or valid check with proper ID. **BAD CHECK WRITERS WILL BE PROSECUTED, NO EXCEPTIONS.** ALL ITEMS MUST BE PAID FOR ON THE DAY OF THE SALE. We are not responsible for accidents, thefts or errors in advertising. It is the sole responsibility of all bidders and/or buyers agents to inspect all personal property to their satisfaction before all parties bid and/or buy. All sales are final. No exceptions. Statements made at the time of auction take precedence over printed material.