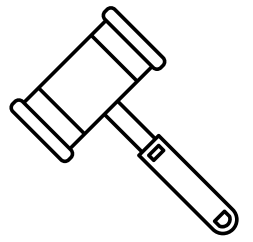


AUCTION



Saturday, February 17, 2024 @ 10am
Sedgwick County Fairgrounds, Cheney, KS

Annual Farm Consignment Auction

Tractors, Combines, Skid Steers

- New Holland LX665 turbo super boom Skid Steer, 2587 hrs, forks & bucket, #69906 (NICE)
- 2005 Case IH 2388, 2spd, chopper, RWA, separator hrs 3255, engine hrs 3927 (GOOD)
- IHC 1660 Axial Flow Combine, 5285 hrs, Cummings engine, new bars, both concaves
- 25' 1010 Header with trailer
- JD Swather 3430 w/ 300 turn knife, head overhauled 3 years ago
- 2005 JLG Skytrak Model 6042 Telehandler #0160008997
- 1978 875 Versatile 280 hp new hydraulic reservoir & fluid, new u-joints, rebuilt brake (runs great)
- 2290 Case, 7,000hrs, dual hyd, PTO
- IHC International 1066 w/ Westendorf loader

Farm Equipment

- New Holland 900 Ensilage Cutter 990W HD pickup header (NICE)
- 2 - Gehl 970 Forage Wagons, tandem axle (NICE)
- JD 714A Silage Wagon
- Sunflower 34' Field Cultivator, Model 331
- Great Plains 13' End wheel Drill, double disks
- JD 569 Mega Wide Round Baler, 9628 bales
- 2013 Vermeer Round Bale Processor
- IHC #16 Hay Rake 10' ground driven
- 2 - IHC 5100 Grain Drills 20X8 w/ double time hitch & fertilizer
- Kent 44' Field Cultivator w/ harrow & good sweeps
- 3-year-old Fertilizer tip tanks w/ 2 3,000 gal poly tanks
- Graham Hoeme 14' Chisel
- Krause 13' Disk
- 28' Crustbuster Springtooth
- JD DRA Grain Drill w/ owner's manual & new tires
- Case IH 340-370 Disk 30' good blades
- Krause 4994 W Disk 33'
- Krause 16' Chisel
- JD 145 5-bottom plow
- JD 640 Side Delivery Rake
- JD 825 6-row Cultivator
- 6' Speed Mover
- JD 510 Round Baler
- Tinutti 10 wheel rake



Vehicles

- 1975 IHC Loadstar 16' bed & hoist 4X2 spd, tubeless tires, 57,000 mi
- 1991 GMC 1500 SLX Sahara 4X4 67,624 miles
- 1963 Chevy C60 grain truck 16' bed & hoist
- 2000 Chevy Pickup single wheel 1T 2wd, 175,000 miles, V8 auto, gooseneck hitch
- 1993 Chevy ¾ T pickup 2wd, 104,000 miles, V8 5 spd gooseneck hitch
- 1999 Chevy 1T Dutchman Class C Motor Home 454 vortex, 59,000 miles, generator & brakes need work
- 1996 Dodge 2500 flatbed 4X4 Cummings 5 spd regular cab 240,000 mi

Trailers

- Car trailer 16' w/ ramps
- Doolittle 16' Enclosed Trailer, insulated walls, roof AC/Heat
- Swather Trailer
- Bocker Conveyor Trailer (used for putting materials on the roof)
- 16' Bumper Pull Utility Trailer
- 16' Bumper Pull Stock Trailer
- 1998 CM 4-horse Slant Gooseneck Stock Trailer
- Ford Pickup Bed Trailer
- Lamar 83"X12' Utility Trailer
- 2023 HT 16' Car Trailer
- Welding Trailer
- 2022 Grupo Industrial 16' Dump Trailer
- 2011 Lamar 20+5 GN Deck Over
- 2012 Diamond D TD GN Straight Deck, hyd. brakes
- 1998 Hillsboro 6'8"X20' Stock Trailer (NICE)
- 15' Boat Trailer

Auctioneer's Note:

Call Fred with questions about items. More items will be added day of sale. See more pictures at [Facebook.com/FredFoleyAuction](https://www.facebook.com/FredFoleyAuction) and [KansasAuctions.Net](https://www.KansasAuctions.Net).

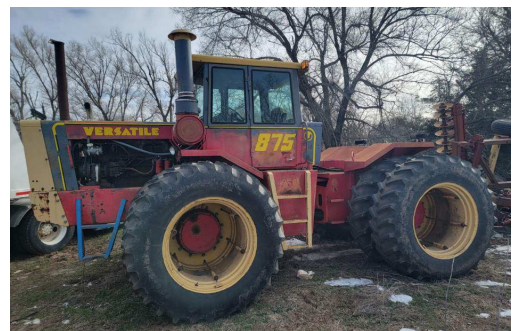
Lunch will be served.
Come and enjoy the day!

Livestock Equipment

- 30 - HD Cow Panels 10'X12'
- Stock Tank
- 2 - Round Bale Feeders
- 2 - Green Creep Feeders
- Horse Round Bale HD Feeders
- Foremost ½ Tub + Alley Way & Divider Gates
- WW Panels & Gates
- WW Crowd Alley
- Pearson Squeeze Chute
- Stromberg Cattle Panels
- Stromberg Slant Bar Feeder, 14 panels
- Miti Handi Calf Cradle
- Stock Racks for 1T Flatbed
- Hedge Corner Posts
- Pole Corner Posts
- Rotomix VXT 425 Twin Screw Vertical Mixer w/ scales
- Filson Squeeze Chute
- Metal Feed Bunks
- 2 Round Bale Feeders

Tools & Miscellaneous

- 3-phase Shop Machinery for Woodworking
- Truck toolbox
- Metal Tool Crib
- Small Wooden Shed
- Small Carport
- Pallet 5/4"X6"X16' & 20' Smooth Cedar Decking
- Pallet Miscellaneous - 16' & 20' Composite Decking
- Electric Vehicle Lift
- Implement Rims - 14", 15", 16"
- Old Spoke Wheels
- 2 - Pallets Cinder Blocks, 80+
- Steel Cabinet w/ doors on wheels
- Hydraulic Log Splitter on wheels
- CAT Irrigation Engine
- 20.8 X 42 Rear Radial Tractor Tires, 620/7042 Rear Radial Tractor Tires, 4
- 31" Burn Rings
- Bridge Planks
- Guard Rail
- 2014 Ford F250 8' white bed
- 2019 Ford F250 8' white bed
- Model 3330 Earth Stove w/ 5, 3' sections stainless steel double-wall pipe
- Sucker Rod
- New & Used Tin
- Genie Manlift, works
- Skyjack Manlift, works but needs charged



Fred Foley
Auctioneer
316-772-7704



Associate Auctioneers
John Hillman
Rick Horsch
Brian Rosenhagen

Announcements made day of sale take precedence over all printed materials. Not responsible for accidents.